

# CityStreets

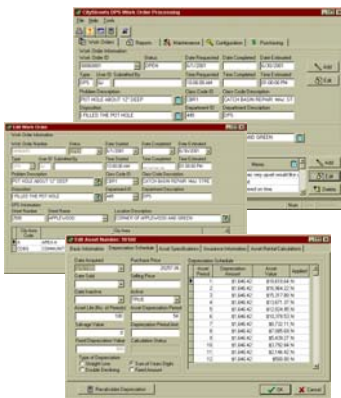
(517) 663-5710

The Local Work Order Solution!

www.citystreetsoftware.com

## CityStreets Features...

### Work Order and Asset Information



Work order information in **CityStreets** is neatly contained on one screen. Tabs allow easy access to work order calls, labor, materials, assets, and areas. **CityStreets** maintains a wide array of asset information including depreciation schedules.

### Purchasing, Receiving, and Inventory Control

**CityStreets** includes comprehensive purchasing and receiving. Track all aspects of inventory items that range from general ledger account ID's to on-hand location quantity to re-order point levels.



### Reporting



**CityStreets** offers powerful reporting capabilities including graphs, standard reports, and an ad-hoc report writer. Export graphics to your Word or Excel documents and export reports to "html" for your city's web page.



**Innovative**  
Software Services, Inc.

*The ease of Windows® with the power of an SQL compliant database!*

### Features

- CityStreets is a full featured work order, fleet maintenance (motor pool), parks & recreation, lot inventory, purchasing and receiving system
- Maintain work orders for:
  - Department of Public Works
  - Fleet Maintenance Repair
  - Scheduled Maintenance
  - City Ordinance Enforcement
  - Utilities
- Integrated Fleet Maintenance takes motor pool one-step further by providing the ability to not only track vehicles, but every asset owned and operated by the city while maintaining standard vehicle reporting
- Scheduled Maintenance module is directly updated via Fleet Maintenance work order reporting
- Consistent look and feel throughout
- Extensive search and filter capabilities
- Ad-hoc reporting
- Runs on Windows 95/98/Me/NT/2000/XP/2003

### Work Orders

- Work order identification can be tracked separately by module
- Work order items can be tracked separately by module
- Assets are shared among all modules
- Work order identification may be auto-incrementing and/or dynamically assigned
- Routings may be created for next work order generation
- Track phone calls by who, what, when, and where for any module
- Track item usage by work order
- Track asset usage by work order



Innovative Software Services, Inc., P.O. Box 70, Eaton Rapids, MI 48827 (517)-663-5710 sales@issi-central.com

Call today for a demonstration of CityStreets!



## **Innovative** Software Services, Inc.

- Track by department and General Ledger class code
- Track and maintain "areas" by work order, such as community development block grants
- Track start, completion, and estimated times and dates
- Keep unlimited notes for work order descriptions and dispositions
- Track status by open, closed, pending, approved, denied, closed-denied, on-hold or billed
- With DPW work orders, track physical street address and location description
- DPW work orders automatically track user defined areas
- Track Motor Pool assets
- Track each call with callback feature
- Track employee labor by hours, rate, and labor code for each work order
- Track all inventory items by quantity, price, and allocated or issued status
- Track estimated, actual, and rental hours against an asset

### **Areas**

- CityStreets features automatic tracking of user-defined areas and their grouping against a work order, such as CDBG areas, Inner-city work areas, property tax areas, DDA areas, or any other area you wish to define
- Maintain city street names for consistent reporting
- Define city areas by street number range, either odd, even, or both

### **Individuals**

- Ability to maintain employees, vendors purchasing agents, residents, customers
- Keep unlimited number of addresses
- Keep unlimited number of contacts, such as phone numbers, fax numbers, email, and web page addresses

### **Inventory Items**

- Define General Ledger account ID's
- Define item types, descriptions and manufacturers
- Track year to date and inception to date for purchases, sales and consumption
- Able to maintain re-order points by minimum and maximum re-order quantities
- Track inventory by warehouse specific location and quantity
- Maintain unlimited vendor item cross reference
- Maintain unlimited number of vendors
- Track preferred vendors by item

### **Assets**

- Maintain asset details including vehicle identification, year, make, model, serial number, purchase price, rental price, plate number, weight, and active status and many more
- Track an unlimited number of user defined asset specifications for vehicles and equipment, such as six cylinder, ABS brakes, four wheel drive, or even filter specifications
- Track all of your asset equipment, such as chain saws, lawn mowers, and chippers
- Track department assignment
- Assign an asset to a "parent" asset
- Print asset specifications sheets

### **Security**

- Easily add users
- Configure user passwords
- Add modules to a user account
- Configure modules for user accounts to the smallest detail
- Read-write capabilities
- Ability to prevent viewing of a function
- Ability to totally block a function

### **Other Features**

- Full fledge purchasing and receiving
- Over 40 standard reports
- Export data to other applications
- Built in Help system

